



OK-080C

Automatic Cutting Machine Control Unit

General Warnings

- Control the supply voltage before mounting the device. Make sure that you have disconnected the supply cables before maintenance.
- Protect the device from high humidity and water disposal. Check for condensation at sudden humidity changes.
- Pay attention to relay contact currents meant at the technical instructions while connecting a load to the device.
- Do not open the device in case of breakdown.

General Definitions

- 6 NPN transistor valve output.
- 3 dry contact digital input; start, stop and saw at back, right and left switches.
- 1 time display. Counts backwards for each operation.
- Machine valve statuses and saw directions are displayed with 16 leds.

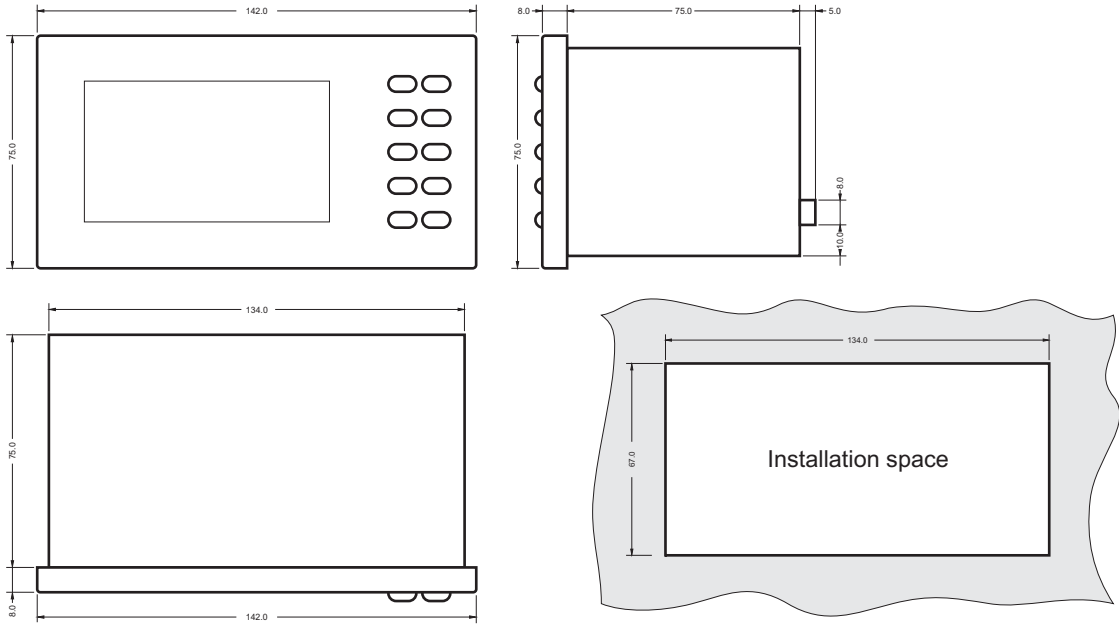
Features

- Easy to use.
- Secure front panel and mechanic structure and rubber buttons.
- Legible and understandable display.
- Function displaying led indicators.
- Compact structure and simple electrical connections.
- Simple plug&play structure. No special adjustments required.
- Can be used as only water drain or only triple lever according to the type of machine.
- Adjustable interval times.
- Turkish and English front panel options.
- Different front panel colors and language options.
- Custom front panel option for companies (in orders at acceptable numbers).

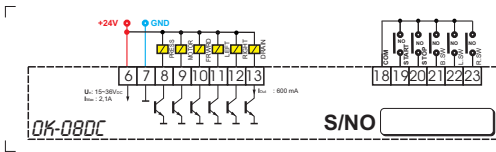
Technical Features

Electrical Features	
Supply voltage	24 VDC
Supply voltage range	15 - 36VDC
Power consumption	*0,5A IMax : 1,8A *(excluding valves)
Output type / Current / Number	NPN transistor / IOut: 0,6A Max. / 6 outputs
Input type / Current / Number	Dry contact NPN input / 5 - 20 mA / 1 start + 1 stop + 3 Switches
Saw direction selection	Right 45, Left 45, manual
Operation selection	Single cut, automatic cut, full cut operation (returning to the beginning position)
Operating temperature	0 - 70°C
Ambiance humidity rate	Between %25 and %85 without condensation
Physical Features	
Dimensions	W: 75,0 x L: 142,0 x H: 87,0 mm (without klemens connections)
Weight	300 gr
Frame size	68,0 x 135,0 mm
Box size	105 x 160 x 95 mm
Quantity / Package	10

OK-08DC Dimensions



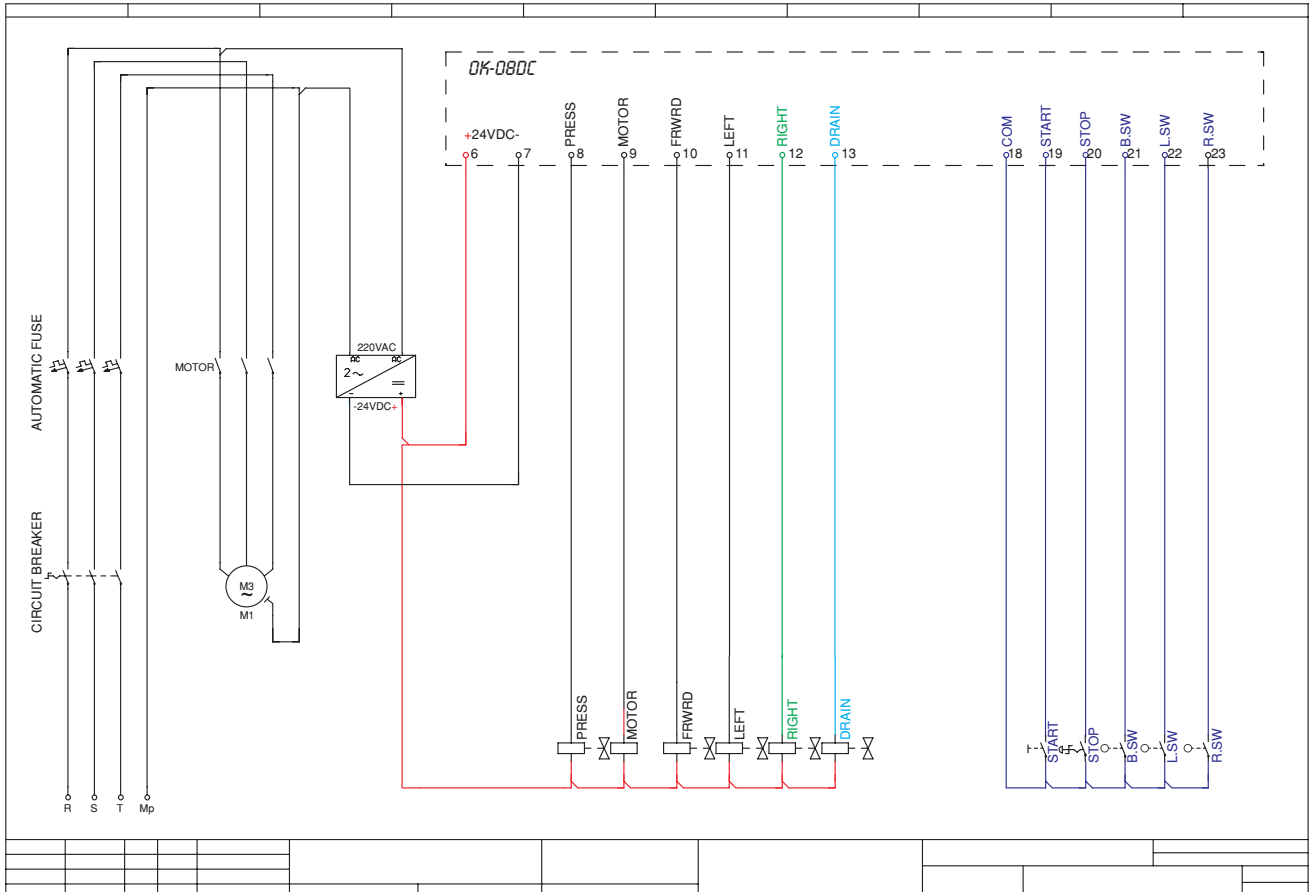
Back Sticker



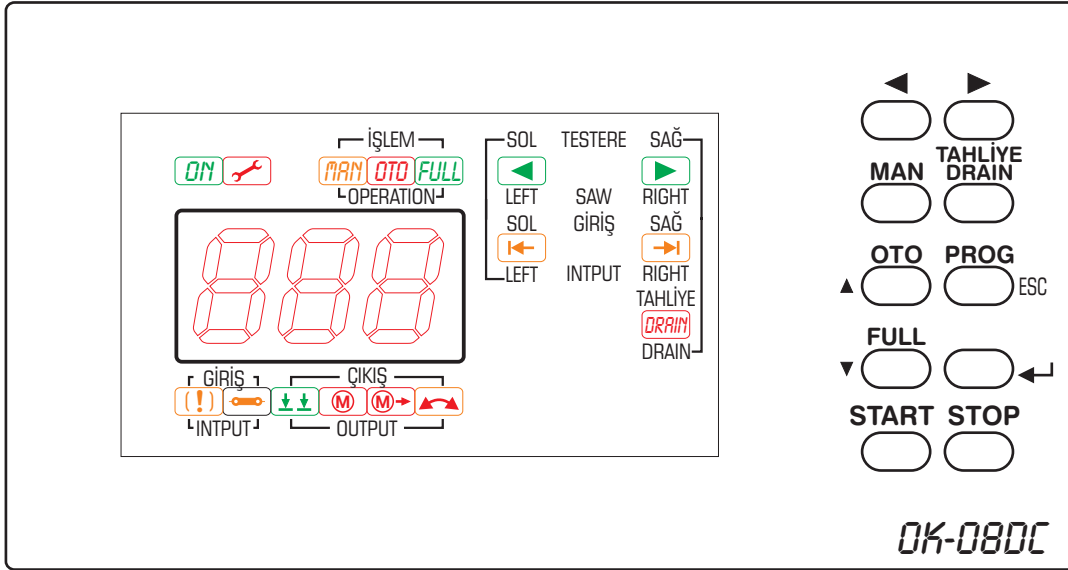
**OTOMATİK
KESİM**
Besleme: 24 VDC
Çıkış : 24 VDC
www.ne-ka.com.tr

OK-08DC
Arka etiketi

Electrical Control Connections



OK-08DC Buttons, Leds and Definitions



	Active when machine starts. Turns off in program mode.
	Program mode is on.
	Manual mode is on. The machine will make a single cut and returns.
	Automatic mode. The machine will cut from 45° and turns to the other 45° and will make a second cut.
	Full mode. The machine will cut from its position and turns to other side makes a cut and returns to first position.
	Displays the left or right direction buttons of the saw if pressed.
	Angle switches. Displays the right and left switches if pressed.
	Saw in manual position. Cutting angle can be adjusted manually.
	Blinks for warning when the Stop button is pressed.
	Saw at back position.
	Press is pressed.
	Motor is operating.
	Motor moving forward.
	The saw is changing direction.
	Displays the time. Displays adjusted value when the PRG led is on.
	Saw angle selection buttons. Right, left and manual angle selection buttons.
MAN	Manual operation button. The machine will make a single cut and returns.
OTO ▲	Automatic operation button. The machine will cut from its position and turns to other side makes a second cut and stays. Increases the value and browses the menu when PRG led is on.
FULL ▼	Full operation button. The machine will cut from its position and turns to other side makes a cut and returns to its first position. Decreases the value and browses the menu when PRG led is on.
PROG ESC	Enters the Program mode. [ESC] when the PRG led is on.
	Confirms the parameters. Enter when PRG led is on.
START	Start button: Starts the machine.
STOP	Stop button: Stops the machine.

Machine Adjustments

- **Selecting an operation:** Select the operation with [MAN], [OTO] and [FULL] buttons.
- **Changing the angle:** Select the angle with [◀], [▶] and [TAHLİYE DRAIN] buttons. The angle can be set manually while [TAHLİYE DRAIN] is selected.
 - The machine will make a single cut and returns in mode. Will not work in automatic and full.
 - The saw must be set to one side by hand in position in order to use the [◀] and [▶] buttons. [◀] and [▶] buttons won't work if the saw is in the middle position.
- **Starting and stopping the machine:** The [START] button starts the machine.
 - The [STOP] button stops the machine.

Operating in Exposition Mode

- Enter the Program mode.
- Adjust the [STOP] parameter value to <16> and press [◀] button.

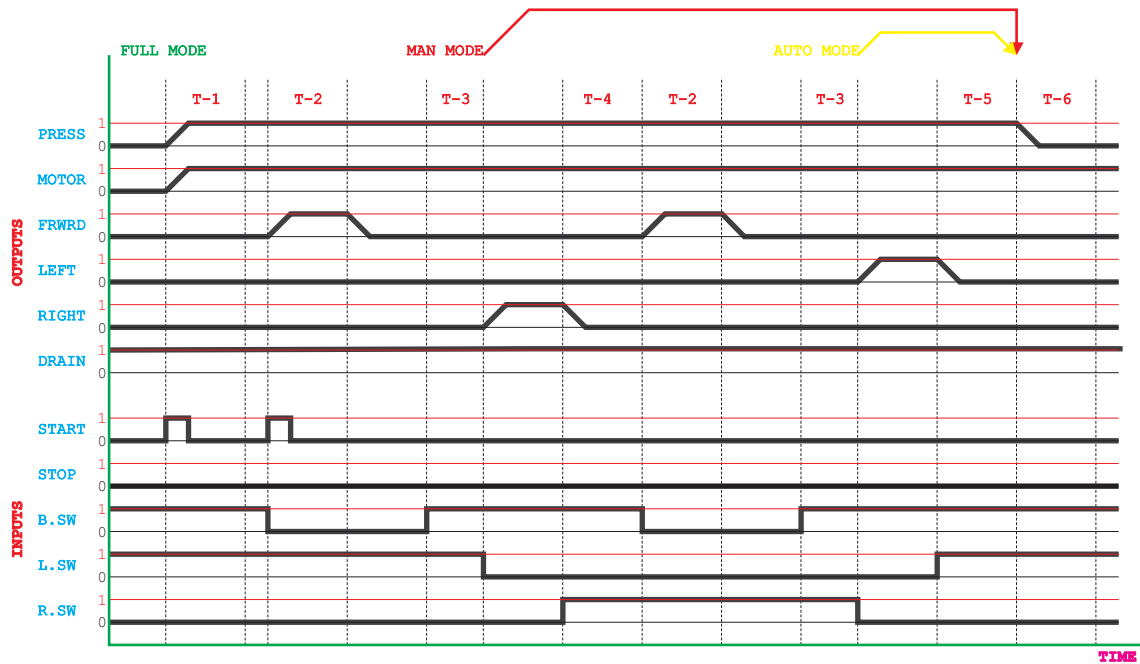
Changing The Program Parameters

- Press the [PROG] button. led will be off and led will be active.
- Enter the password with [▲] and [▼] buttons and confirm with [◀] button.
 - Browse the parameters by [▲] and [▼] buttons.
 - Edit the parameter by pressing [◀] button. The value will be displayed.
 - Adjust the value by [▲] and [▼] buttons.
 - Confirm with [◀] button. Press [ESC] to cancel.
 - Press [ESC] to exit while the parameters are being displayed. led will turn off and led will be on.

OK-080C Parameters and Definitions

	Definition	Range	Present
SFR	Password code. If "0", password protection is off.	0.0 - 99.9	0.0
T-1	Press's pressing time when start is given. Motor starts.	0.1 - 99.9 sn	1.0 sn
T-2	Motor forward time while start is given again.	0.1 - 99.9 sn	2.5 sn
T-3	The time to pass for the next operation when the motor turns back.	0.1 - 99.9 sn	0.5 sn
T-4	The time to pass for the next operation when the motor presses the left switch.	0.1 - 99.9 sn	0.5 sn
T-5	The time to pass for the next operation when the motor presses the right switch.	0.1 - 99.9 sn	0.5 sn
T-6	Press release time.	0.1 - 99.9 sn	0.5 sn
T-7	Stop buton's times.	0.1 - 99.9 sn	2.0 sn
T-8	Drain valve's time.	0.1 - 99.9 sn	0.5 sn
TST	Exposition mode setting parameter..Set this paramter to 16 to operate in exposition mode. Operates until stops is pressed. The saw will not work , only the movements will work.	0.1 - 99.9	0.0

Time Diagram



Pay Attention

- The machine works in drain mode if the saw is not pressing to the right or left switch as it is started.
- The saw will make a single cut and return back even it is in auto or full mode if it is in drain position.
- The saw angle has to set manually by hand and mechanically fixed when the machine is in drain position.
 - The right and left buttons will not be active until the saw is set to one side manually by hand in drain position.
- Once the machine is started, the motor of the saw will operate until the stop button is pressed.
- The saw will not work in exposition mode to prevent accidents, all other functions works.
- The machine will operate until the stop button is pressed in exposition mode.
- 8. time is the time for the air inlet to cylinders after drainage.